

Novello Street

Guide Price £495,000





Novello Street

£495,000

Leasehold

1 BED

Flat

0000

SQ FT

0000

SQ M

The flat offers almost 500 sq ft (46.3 sq m) of living space set on the second floor of this purpose built apartment block. There is a bright reception room, separate kitchen, double bedroom with built in storage, and a bathroom. The flat is presented in good condition and benefits from a private off street parking space at the front of the property.

Novello Street is an incredibly popular no-through road, with Eel Brook Common at one end and Parsons Green at the other. Fulham Broadway is also a short stroll away through the park and has many local amenities including a Wholefoods, Vue cinema, and plenty of restaurants and cafes. The closest underground station is Parsons Green (District Line, Zone 2), approximately 50 meters away. There is also a Waitrose supermarket at Parsons Green as well as the famous White Horse Pub.

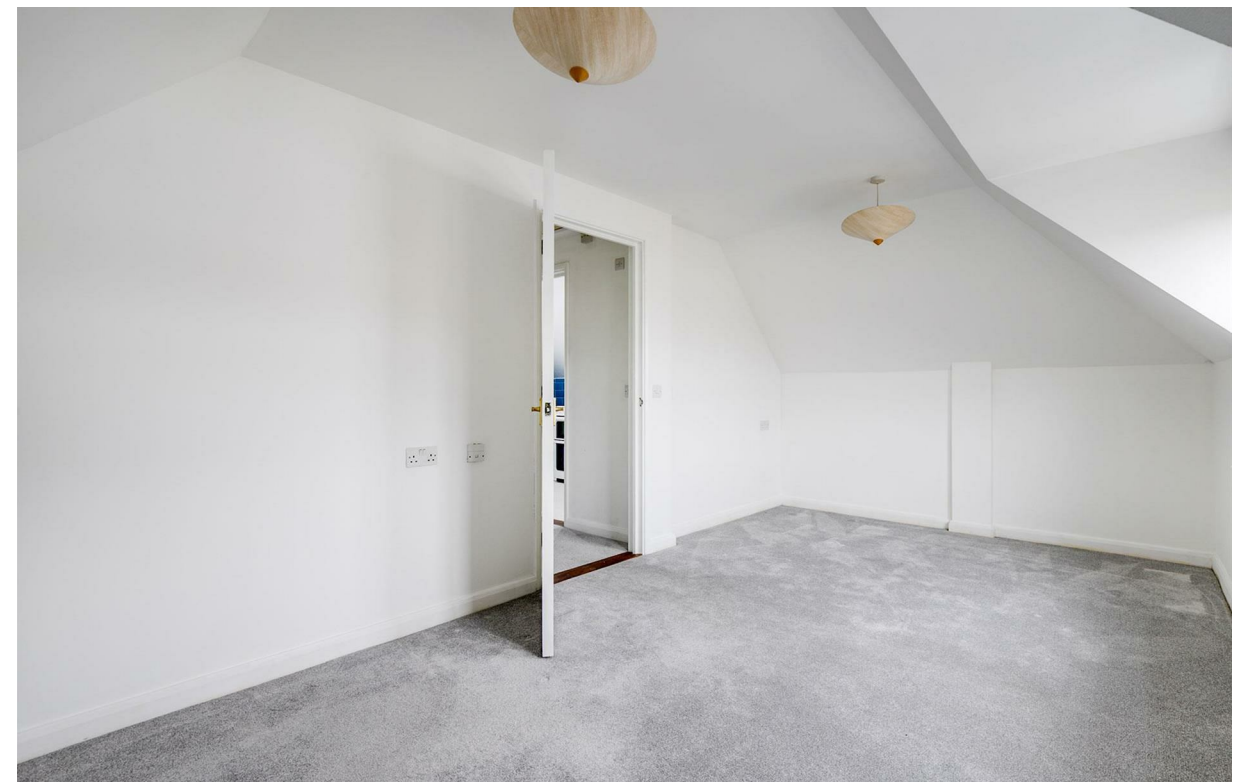
- 1 bedroom
- Bathroom
- Living room
- Kitchen
- Second floor
- Off street allocated parking space
- Fantastic location
- Approx. 50m from Parsons Green station
- 498 Sq ft (46.3 Sq m)



CHRIS HOLLISS

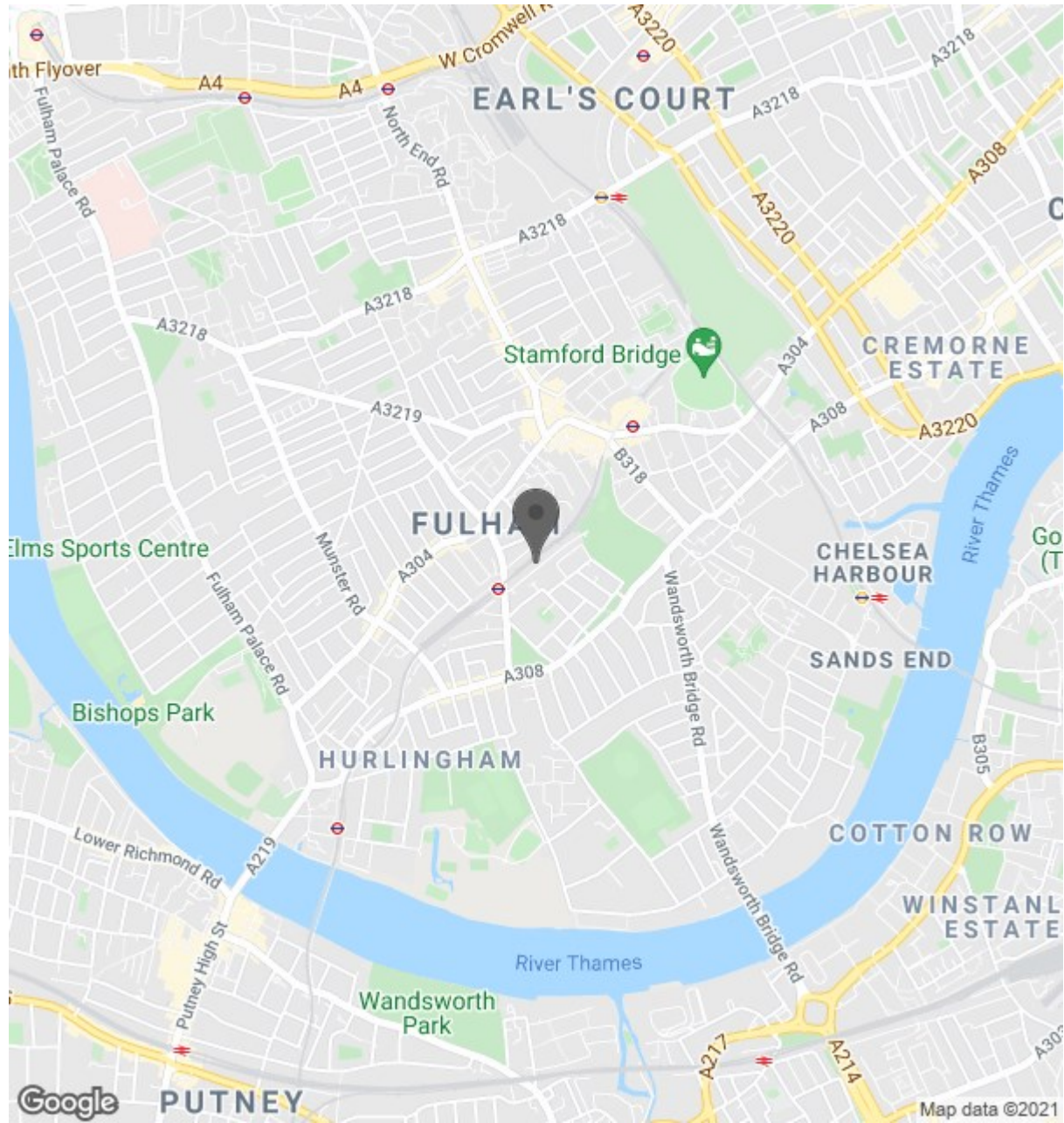
020 7384 6790

chrish@brik.co.uk





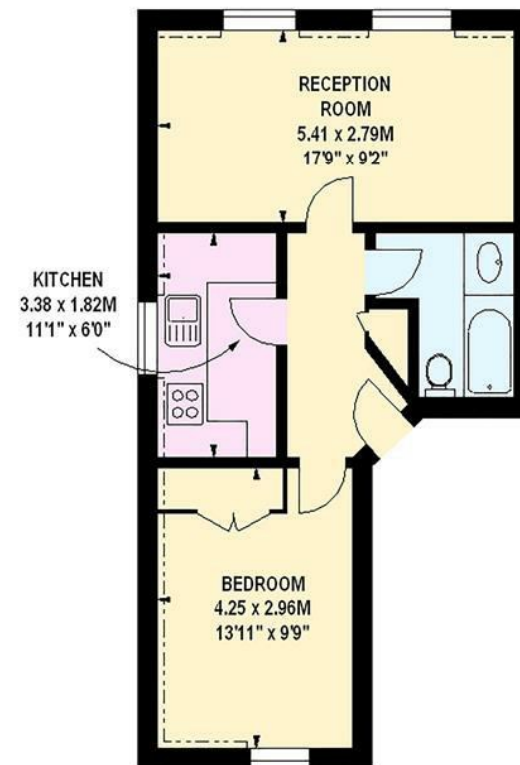
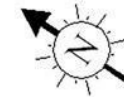
Location



Mitre House, SW6

Approximate gross internal area

46.26 sq m / 498 sq ft



Second Floor

The floor plan is not to scale and measurements and areas shown are approximate and therefore should be used for illustrative purposes only. The plan has been prepared in accordance with the RICS code of Measuring Practice and whilst we have confidence in the information produced, it must not be relied on. If there is any aspect of particular importance, you should carry out or commission your own inspection of the property.
Copyright of FeaturePRO.