



Sealeys
Walker ■ Jarvis

(01474) 369368



10b1 St. Georges Centre

, Gravesend, DA11 0TA

£12,500 Per Annum



- Gravesend's Largest Shopping Centre
- Sales Area 236 Sq Ft
- Kitchenette and WC

Full Description

RENT

£1,041.66 PER CALENDAR MONTH (£12,500 PER ANNUM) PLUS VAT

LOCATION DESCRIPTION

The St Georges Centre is Gravesend's Largest Prime Retail Shopping Centre, housing national brands such as Sports Direct, Boots, Rymans, Timpsons, WHSmith and The Post Office.

PROPERTY DESCRIPTION

A small 'L' shaped ground floor shop unit currently of 236 Sq Ft ideal for the local trader.

CURRENT BUSINESS USE

The current class of business use is an E Category Use. Interested parties are advised to make their own enquiries with the local authority.

CURRENT BUSINESS RATES

Figures from the Valuation Office show a current rateable value of £16,500 per annum as at January 2021 which normally means an amount payable of between 40%-50% of this figure. Please check with the relevant local authority which is Gravesham Borough Council. You as a tenant may qualify to apply for small business rates relief meaning you could pay nothing or a proportion of this payable amount.

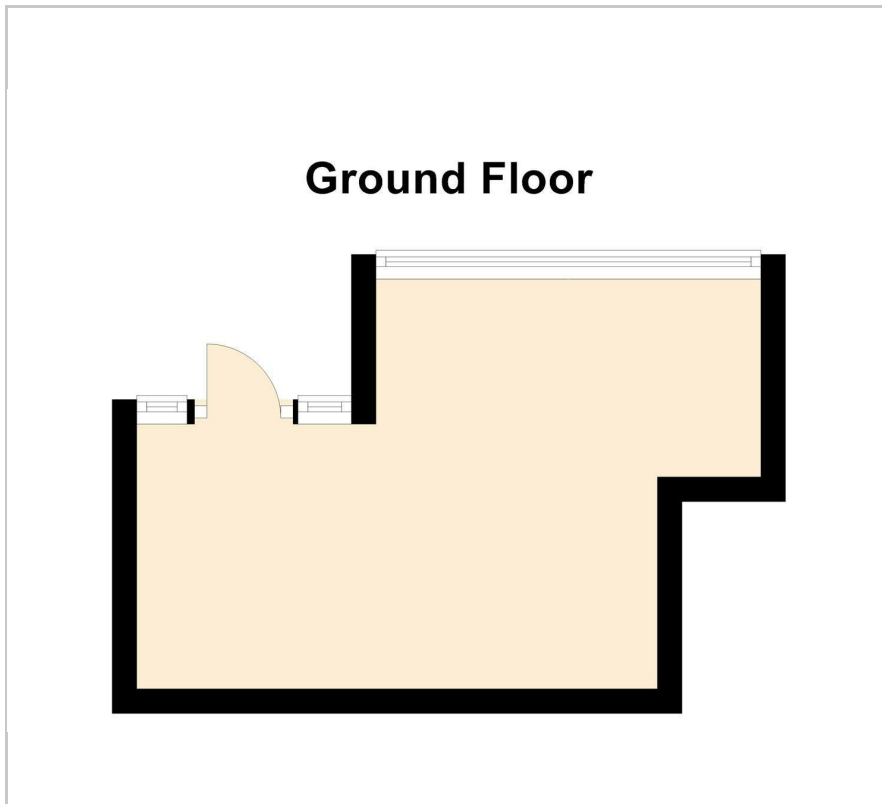
ADDITIONAL CHARGES

In addition to the rent the following are also charged:

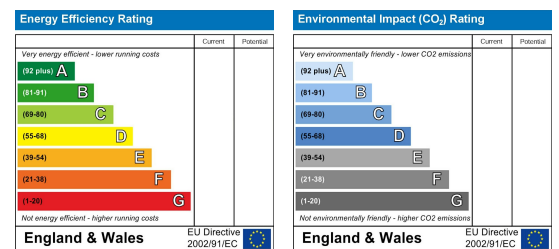
Service Charge: £1,564 per annum

Building Insurance: £TBC per annum

Floor Plan



Energy Efficiency Graph



Viewing

Please call our Commercial Department on (01474) 369368 or Email: commercial@sealeys.co.uk if you would like to arrange a viewing for this property or require further information.

Sealeys Walker Jarvis
184 Parrock Street
Gravesend
Kent
DA12 1EN
www.sealeys.co.uk

Agents Note: Whilst every care has been taken to prepare these marketing particulars, they are for guidance purposes only. These details, description and measurements do not form part of a contract and whilst every effort has been made to ensure accuracy this cannot be guaranteed. Interested parties must satisfy themselves by inspection or otherwise as to the correctness of them. Floor plans are not to scale and are for illustration purposes only. Any equipment, fixtures and fittings or any item referred to have not been tested unless specifically stated.