



»X No Upward Chain

»X Located Within A Sought After Location Of Knowle

»X Backing Onto Hole One Of Copt Heath Golf Course

»X Fantastic Opportunity

»X Planning Permission To Complete

»X Significant Work Has Already Been Undertaken To The Project

»X New Build Development

»X Five Bedroom Detached

»X Now Requires Completion

## PROPERTY OVERVIEW

This is an outstanding opportunity to purchase new build development project conveniently situated in a prime location of Knowle and affording a southerly facing rear aspect backing onto Copt Heath Golf Course. The project has already commenced and is now offered for sale to those interested in completing the development of this outstanding five bedroom detached residence. The ground floor accommodation offers an open plan living / dining room, through lounge and large study, together with either a fifth bedroom or versatile reception room. To the first floor are four double bedrooms and three luxury bathrooms with the master bedroom affording a walk in wardrobe and views to the golf course. Outside the property is well laid back from the road with a large driveway and to the rear affords a beautiful southerly facing and private aspect. To view what could be a most outstanding project / development please contact Xact Homes on 01564 777284.

## PROPERTY LOCATION

Knowle is a conveniently located and delightful village set on the edge of open countryside, with its period charm, half-timbered buildings and is the home to a historic Parish Church. Knowle contains a wide range of interesting shops, restaurants, plus it is home to an excellent junior and infant school and secondary school, Arden Academy (regarded as a leading state school in the UK). Sporting facilities located nearby consist of the Copt Heath Golf Club and the Old Silhillians Rugby Club as well as numerous private gyms. Knowle borders onto the village of Dorridge, which has its own station with links to Birmingham and London. A few minutes' drive away is the nearby town of Solihull, which offers its own excellent state and private schools, Touchwood shopping centre, which houses many shops, restaurants, bars, cinema and John Lewis department store. Knowle village is well placed to access the M42 and M40 motorways, which then provides links to the M1, M6 and M5, enabling travel to Birmingham, Coventry and London. Resorts World and Arena, Birmingham International Airport and Birmingham International Train Station are also within easy access from Knowle village.

### COUNCIL TAX

TBC

### TENURE

Freehold

### SERVICES

TBC

### BROADBAND

TBC

### LOFT SPACE

TBC

### GARDEN

South facing

## ITEMS INCLUDED IN THE SALE

TBC





1 FRONT ELEVATION

1 : 100



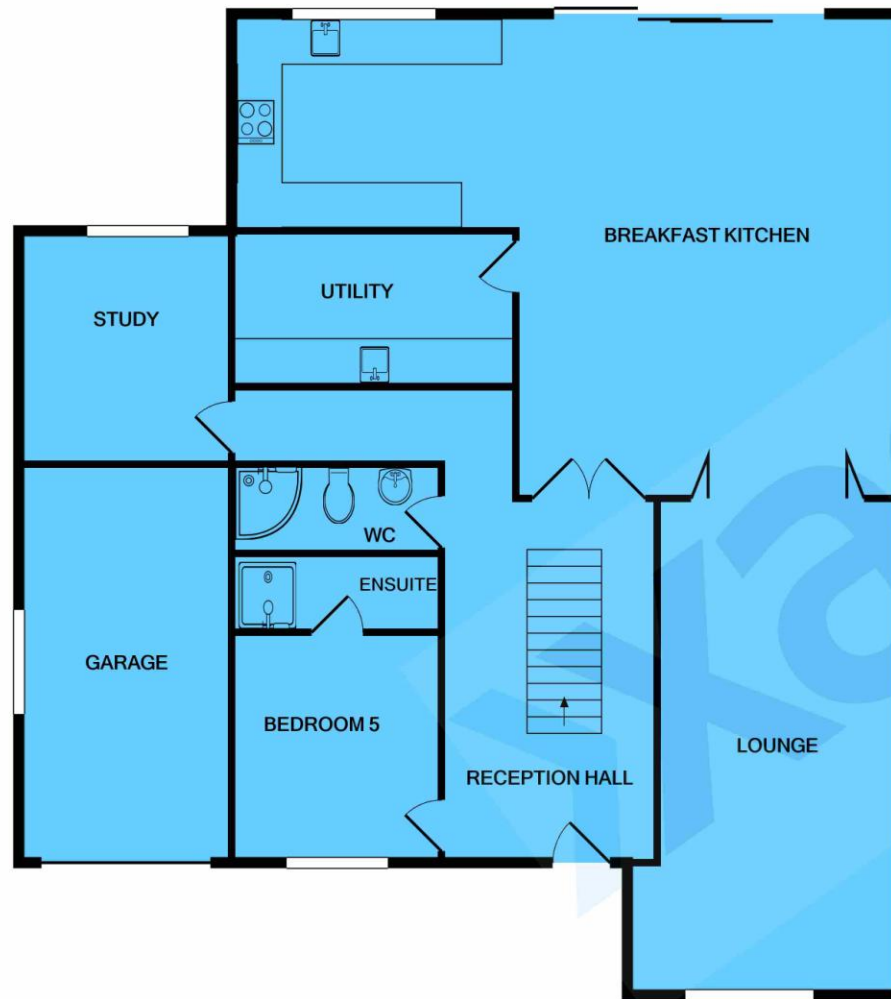
3 LEFT ELEVATION

1 : 100



7 SITE PLAN

1 : 500



GROUND FLOOR



1ST FLOOR

Whilst every attempt has been made to ensure the accuracy of the floor plan contained here, measurements of doors, windows, rooms and any other items are approximate and no responsibility is taken for any error, omission, or mis-statement. This plan is for illustrative purposes only and should be used as such by any prospective purchaser. The services, systems and appliances shown have not been tested and no guarantee as to their operability or efficiency can be given  
Made with Metropix ©2021